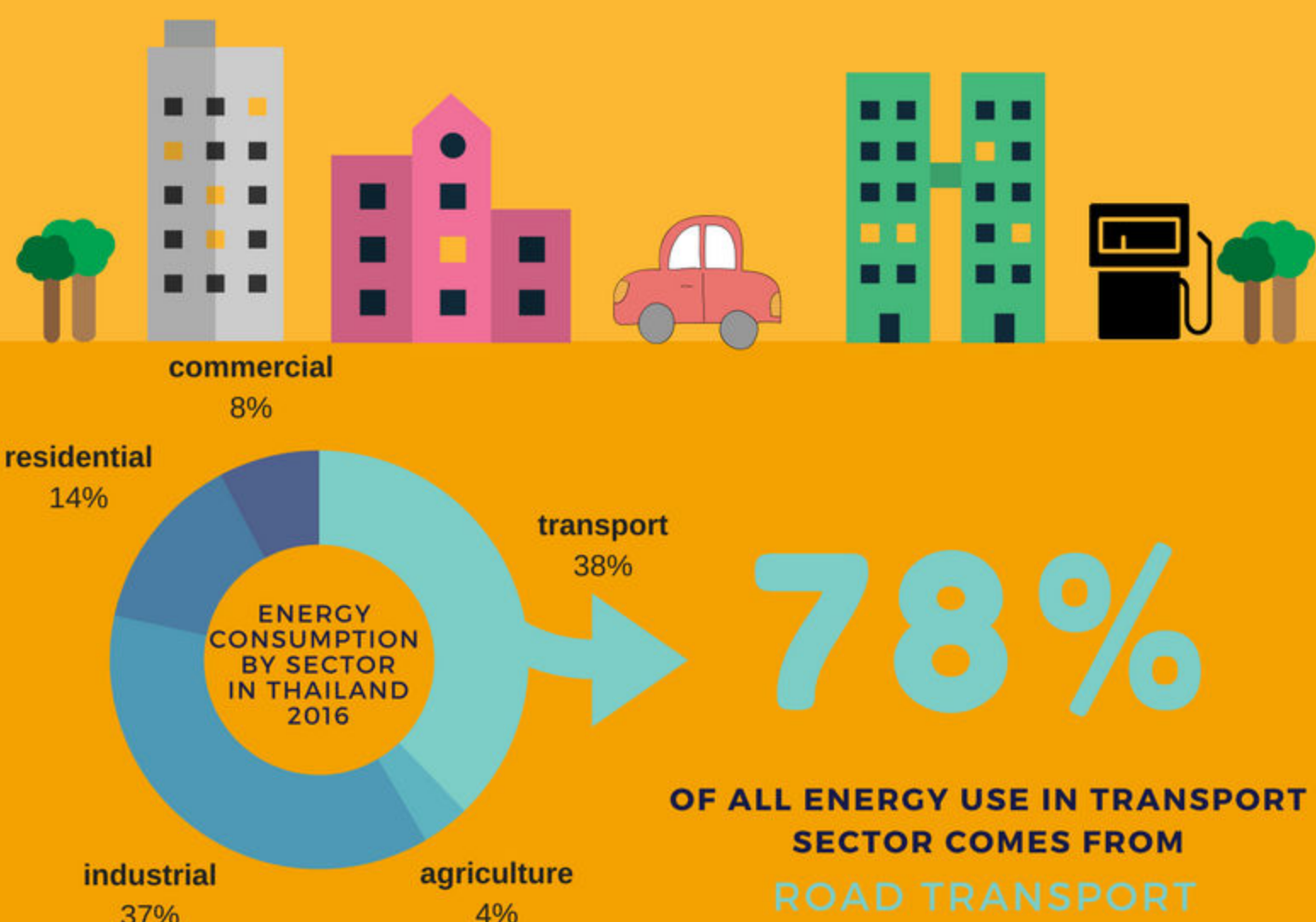


FUEL EFFICIENCY

how much energy does the land transport sector consume in Thailand ?



BY THE YEAR 2016
15.9 MILLION CARS/PICK-UP TRUCKS
20.5 MILLION MOTORCYCLES
WERE REGISTERED

NUMBER OF NEW VEHICLE REGISTRATIONS IN 2015
AND THEIR AVERAGE FUEL CONSUMPTION (LGE*/100KM)



HIGH FUEL CONSUMPTION = HIGH CO₂ EMISSIONS

THE AMOUNT OF CO₂ A CAR EMITS IS DIRECTLY RELATED TO THE AMOUNT OF FUEL IT CONSUMES



SCAN FOR FULL REPORT

CO₂
EXCISE
TAX

THAI CABINET APPROVED A VEHICLE EXCISE TAX BASED ON TAILPIPE CO₂ EMISSIONS INSTEAD OF ENGINE SIZE IN DECEMBER 2012, WITH THE EFFECTIVE DATE 1 JANUARY 2016



Vehicle Type	TAX RATE
ECO CAR ≤ 100 g/km	14%
SEDAN** ≤ 100 g/km	30%
SEDAN** 151-200 g/km	35%
SEDAN** > 200 g/km	40%
EXTRA CAB ≤ 200 g/km	3%
EXTRA CAB > 200 g/km	5%

*LGE = LITER OF GASOLINE EQUIVALENT
**E10/E20